



# Learn How WISI Powers MOBITV Services Transcoding at a Market-Leading Cost per Stream

WISI and MOBITV have a partnership agreement that enables operators to launch MOBITV CONNECT powered by WISI transcoding products. MOBITV is a turn-key app-based video streaming solution for broadband & wireless operators.

## How it Works

Together, the Inca ABR Transcoder 3840 and the MOBITV CONNECT platform empower operators to offer full cable line-ups to end users using next-gen video delivery to multiscreen devices, removing the need for set-top boxes and truck rolls.

MOBITV provides a managed service or an in-network solution:

1. The managed service is a fully hosted solution where video services are transmitted from MOBITV headends situated in various North American locations.
2. The in-network solution allows customers to maintain their own headend and manage all equipment on-prem.

WISI's 3840ABR is a flexible option that can be deployed for both MOBITV solutions.

The 3840ABR ingests local and national services in MPEG-2 or MPEG-4 and transcodes these inputs to multiple frame-aligned MPEG-4 profiles with integrated monitoring and analytics. Video streams are transcoded using a hardware processing engine providing predictable density and performance in a power efficient 1RU chassis.

The 3840ABR is fully compliant with MOBITV recipes for HD and SD services and includes multiple de-interlacing options for broadcast sources.

MOBITV CONNECT ingests multiple bitrate output streams from the 3840ABR, packages them into HLS or Dash chunks and encrypts them for delivery to subscribers. Video services are streamed to the fully customizable MOBITV CONNECT app supported on devices such as Apple TV, Android TV, Amazon Fire TV and Roku.



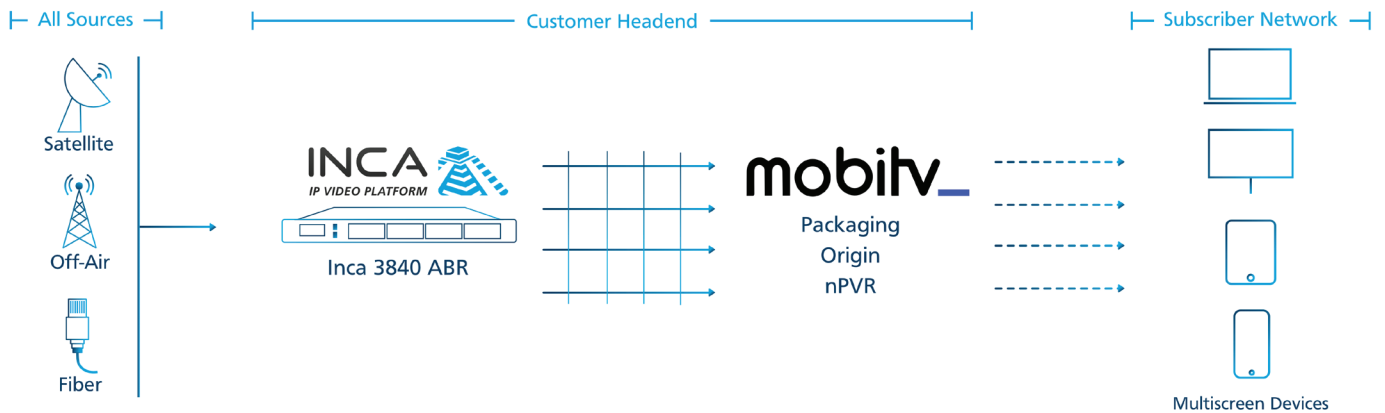
### Why choose the Inca 3840 for your MOBITV project?

- ✓ Approved for transcoding HD/SD sources to MOBITV recipes
- ✓ Predictable density and performance with hardware transcoding
- ✓ Market-leading price per stream
- ✓ Multiple de-interlacing options for broadcast sources
- ✓ Power efficient consuming less than 200 W per 1RU chassis
- ✓ Powerful VidiOS™ management tools with integrated analytics, video thumbnails and stream downloads
- ✓ Rapid configuration and deployment with an award-winning web-based UI
- ✓ Reliable 24/7 operation thanks to quality engineering and strong North American technical support



## Option 1 – In-Network Deployment

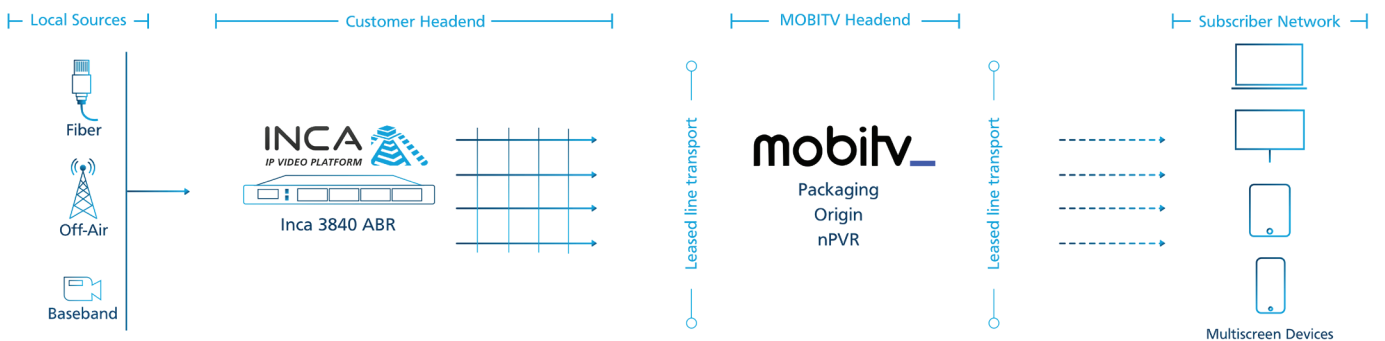
Launch a MOBITV service while utilizing your existing infrastructure to control all streams in your headend, with an In-Network Deployment.



- ✓ Maintain control of source ingest and on-prem equipment while taking advantage of MOBITV features using the existing headend you have invested in
- ✓ Use on prem equipment for future deployments and services
- ✓ Monitor streams with integrated analytics and troubleshooting tools prior to transport to centralized headend network
- ✓ Experience consistent density and performance with high-quality outputs using hardware transcoding

## Option 2 – Partial In-Network Deployment

Launch a MOBITV managed service with local channels from your region in a Partial In-Network Deployment. Transcode local channels on prem in your headend and merge these with national streams using MOBITV's leased line transport system.



- ✓ Continue to offer local services to subscribers using new, innovative TV delivery methods
- ✓ Re-purpose equipment from your existing linear video deployment (MPEG-4 migration, IPTV, QAM)
- ✓ Use on prem equipment for future deployments and services
- ✓ Monitor streams with integrated analytics and troubleshooting tools prior to transport to centralized headend

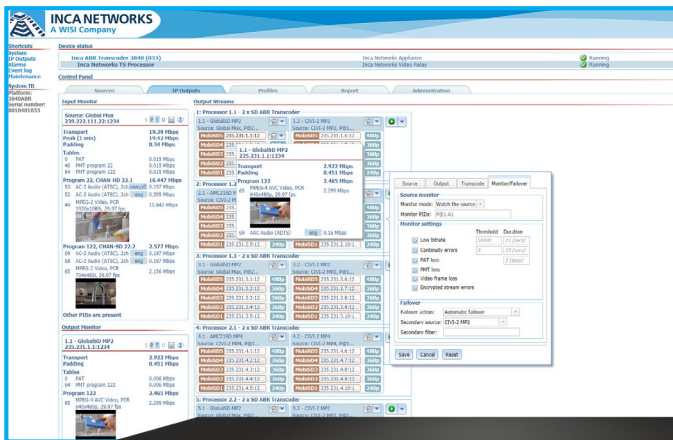
There's no substitute for hands-on experience. Try it yourself – book a product demo now.



# Inca Adaptive Bitrate Transcoder 3840

## ABR Transcoder with Market-Leading Cost per Stream

- ✓ Predictable performance and consistent density
- ✓ MPEG-4 AVC & MPEG-2 sources MPEG-4 ABR outputs
- ✓ Award-winning VidiOS™ stream monitoring & analysis
- ✓ Transcode up to 24x HD or 48x SD to frame-aligned profiles
- ✓ Professional technical support team
- ✓ Power efficient with less than 200 W per chassis



Rapid configuration and deployment with powerful VidiOS™ tools

Deliver beautiful video with a field-proven transcoding engine

Save upfront on capital costs and 'pay as you grow' licensing model



### Applications

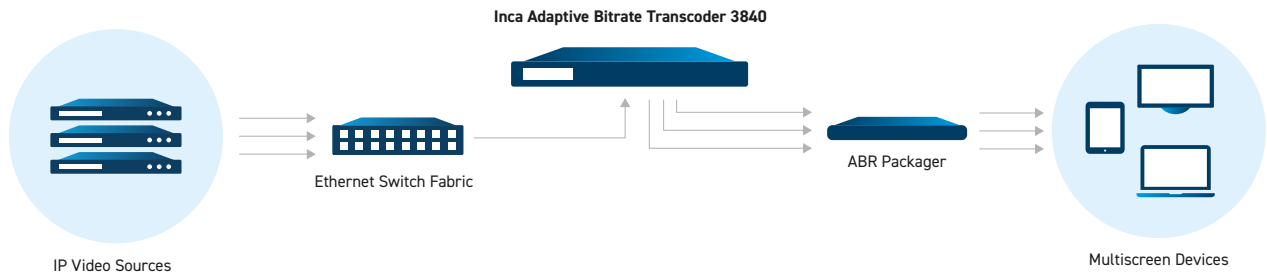
- ✓ Launch new live OTT services, eliminate set-top boxes and expand your subscriber base beyond your existing distribution network.
- ✓ Deliver IPTV services to networks where multicast delivery is not possible; for example, over leased DSL facilities.
- ✓ Seamless integration with Inca Multiscreen Package & Origin 5420ABR or 3rd party packagers.
- ✓ Enjoy peace of mind with intelligent redundancy options like automatic source failover, power and chassis redundancy.
- ✓ Experience powerful VidiOS™ with inbound and outbound video thumbnails, stream capture and download, statistical analysis and event logging.
- ✓ Enjoy full headend visibility and mosaic overview with Inca All Seeing Eye integration - monitor all ABR profiles from each source.



# Inca Adaptive Bitrate Transcoder 3840

## ABR Transcoder with Market-Leading Cost per Stream

### Carrier-Grade Transcoding for ABR Applications



### Technical Specifications

Transport Stream Processing	
<b>Inputs</b>	SPTS/MPTS MPEG-2 Transport Stream Multicast / Unicast UDP IP
<b>Outputs</b>	SPTS MPEG-2 Transport Stream Multicast / Unicast UDP IP Multiple frame-aligned ABR streams per program
<b>Input and Output Video Codecs</b>	MPEG-2 (input only) and MPEG-4 AVC, 4:2:0
<b>Transport Stream Optimizations</b>	PID and Program Filter and Remap
<b>Transport Modes</b>	Constant, Peak Variable
<b>Closed Captions</b>	EIA 608/708 passed through if present in source
<b>DVB Subtitle Burn In</b>	Select by language
<b>DVB Subtitle PID</b>	Passed through if present in source (can be filtered out)
<b>SCTE 35 Ad Markers</b>	Passed through if present in source

Video Transcoding	
<b>Transcode Processors</b>	12x transcode processors per chassis License each processor individually for HD or SD sources
<b>Transcode Processor License</b>	Each transcode processor can be licensed individually to transcode either: <ul style="list-style-type: none"> <li>• 2x HD sources to 4x ABR profiles</li> <li>• 4x SD sources to 2x ABR profiles</li> </ul> Additional profile licenses available including 1080p30 - ask your sales rep.
<b>Additional 3840x Model</b>	Bundled with 12x transcode licenses for 12x HD (top profile of 1080p30 or 720p60) or 24x SD

Audio Transcoding (optional - licensed per stream)	
<b>Source Audio Codecs</b>	AC-3, EC-3, AAC (ADTS & LATM), MPEG 1/2 Audio Layer I/II
<b>Source Audio Channels</b>	7.1, 5.1, 2.0, 1.0
<b>Output Audio Codecs</b>	AAC-LC, HE-AAC, HE-AAC v2
<b>Output Channels</b>	2.0, 1.0
<b>Audio Processing</b>	Nielsen watermark extraction and ID3 tags insertion

Management & Monitoring	
<b>Configuration</b>	Powerful VidiOS™ web-based user interface
<b>Visual Mosaic Monitoring</b>	Compatible with Inca All Seeing Eye monitoring product - All Seeing Eye probe capability included
<b>SNMP</b>	SNMP Trap Forwarding

Network Interfaces	
<b>Management</b>	1000 Base-T
<b>Video</b>	4x 1000 Base-T
<b>NIC Redundancy</b>	LACP, Active Failover, Round Robin

Intelligent Redundancy Options	
<b>Automatic Service Failover</b> (optional, licensed per transcode)	Automatic failover to backup source Automatic recovery to primary
<b>N+1 Chassis Redundancy</b> (optional)	Automatic failover to spare chassis Automatic recovery to primary chassis

Physical	
<b>Mounting</b>	19", 4 Post Rack, 1RU Slide rails included
<b>Dimensions</b>	438 x 44 x 525 mm / 19" x 1.75" x 20.7"
<b>Rack Rail Depth</b>	620 - 805 mm / 24.4" - 31.8"
<b>Weight</b>	15 kg / 33.1 lb
<b>Operating Temperature</b>	0 ~ 40 °C

Power	
<b>Type</b>	Dual redundant hot swap
<b>Input</b>	100 ~ 240 VAC @ 50 - 60 Hz
<b>Power</b>	<200 W Typical

Regulatory Compliance	
<b>EMC Standards</b>	FCC Part 15 Class A
<b>Safety Standards</b>	CSA/UL 60950-1

To arrange an online demonstration or to discuss your project,  
please send a request to [sales@wisi.tv](mailto:sales@wisi.tv)